

# PAL.M.ED

Improving the recognition of palliative care needs of patients presenting to the ED

Dr. Eoin Tiernan<sup>1</sup> Prof John Ryan<sup>2</sup> Dr. Mary Casey<sup>1</sup> Dr. Aine Hale<sup>1</sup> Ms Millie Devenish,<sup>1</sup> Dr. Ian Callanan, Prof Declan Walsh,<sup>4</sup> Dr. Val O'Reilly<sup>1</sup> Ms. Siobhan Hollingsworth<sup>1</sup> Ms Barbara Whyte<sup>1</sup> Ms Olga Price<sup>1</sup> Dr. Niamh Garry,<sup>3</sup>

1. Department of Palliative Medicine, St. Vincent's University Hospital, Elm Park, Dublin 4.

2. Department of Emergency Medicine, St. Vincent's University Hospital, Elm Park, Dublin 4.

3. Clinical Audit Department, St. Vincent's University Hospital, Elm Park, Dublin 4.

4. Faculty of Health Sciences, TCD & School of Medicine and Medical Science, UCD.

The Three Rs ( Response, Recognition, Reflection) is an initiative supported by the Emergency Medicine and Palliative Care Programmes ( funded by The Irish Hospice Foundation) designed and undertaken by the Depts. of Palliative Medicine and Emergency Medicine in St. Vincent's University Hospital.

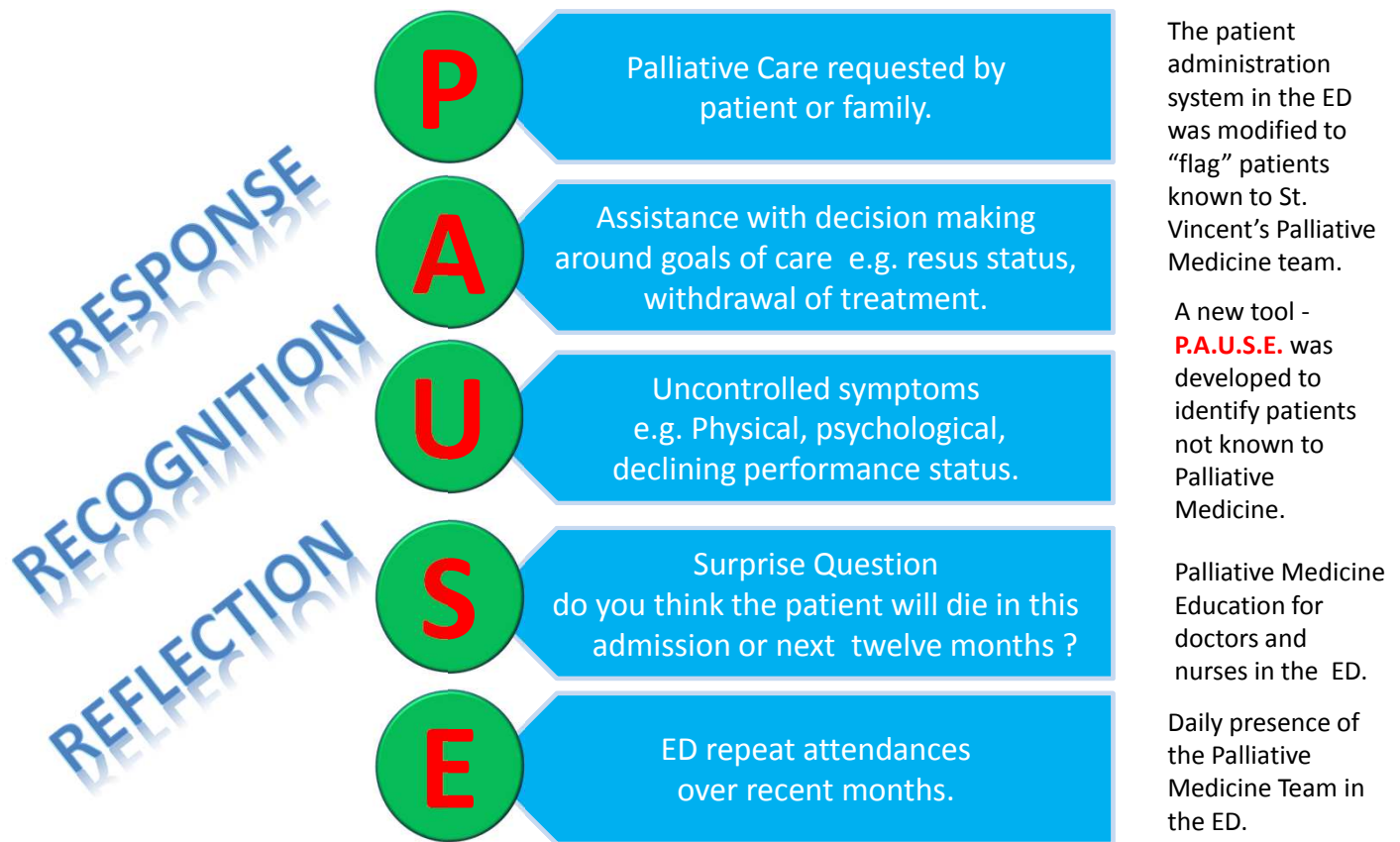
## Methods

New guidelines and systems for early identification of patients' palliative care needs were introduced in the ED. Referrals to the Palliative Medicine service were audited for two months before and after these interventions.

## Patients with palliative care needs - 3 Groups :

Patients already known to St. Vincent's Palliative Medicine Team, patients known to Community Palliative Care Services and patients not known to any service.

If a patient has a serious life - limiting disease...**P.A.U.S.E...**and think **Palliative Care** if 1 or more of the following



## Before

100 referrals to the Palliative Medicine service.  
61 patients were admitted via the ED,  
**6 patients were referred and seen in the ED.**

## After

169 referrals to the Palliative Medicine service.  
92 patient were admitted via the ED  
**46 patients were referred and seen in the ED.**

## Conclusions

The introduction in the ED of specifically designed referral guidelines to the Palliative Medicine services leads to a significant increase in early referrals.